

Poverty and Health

Frank Belmonte, D.O., MPH

Vice President – Pediatric Population Health and Care Modeling

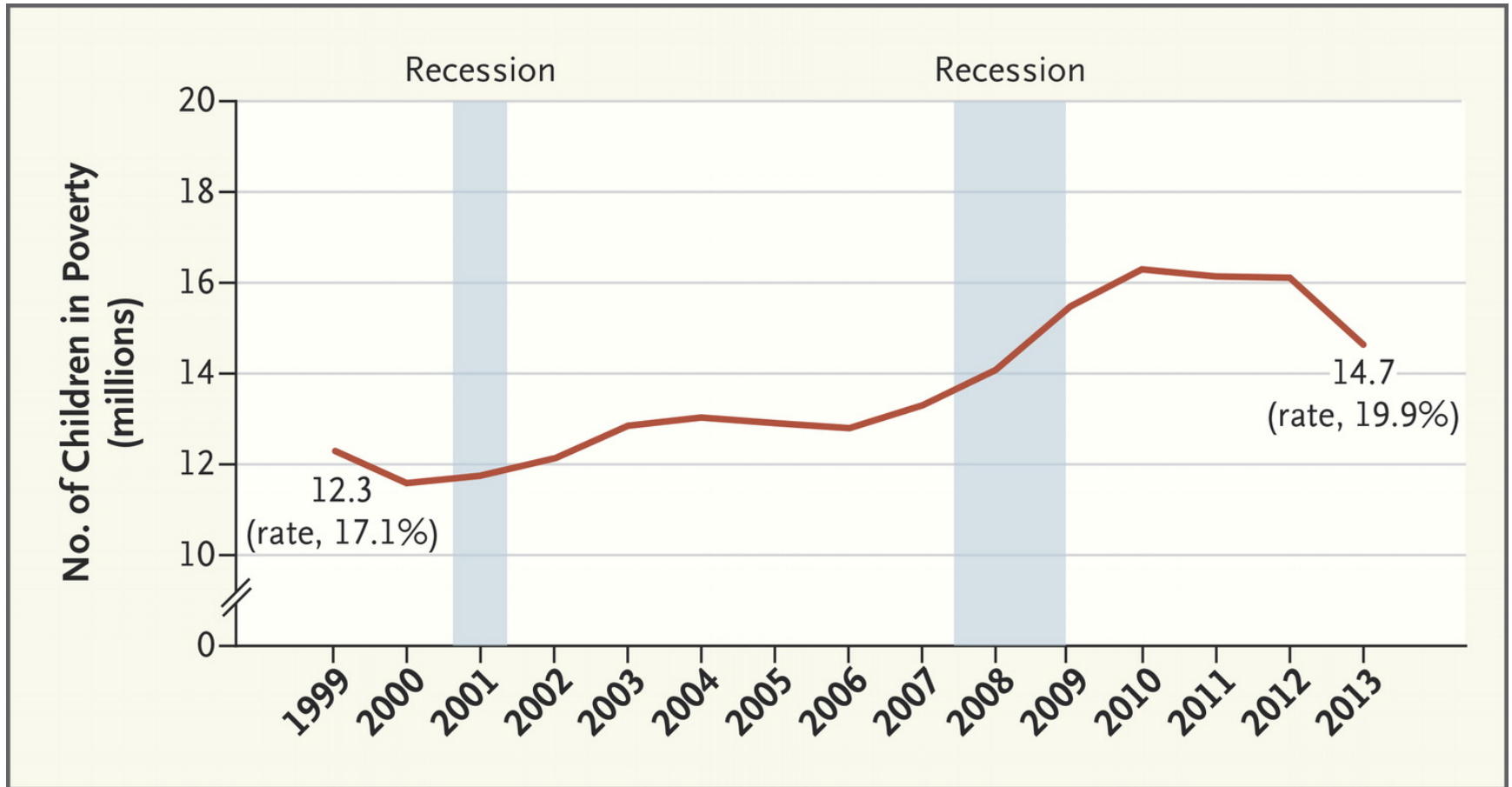


 Advocate Children's Hospital

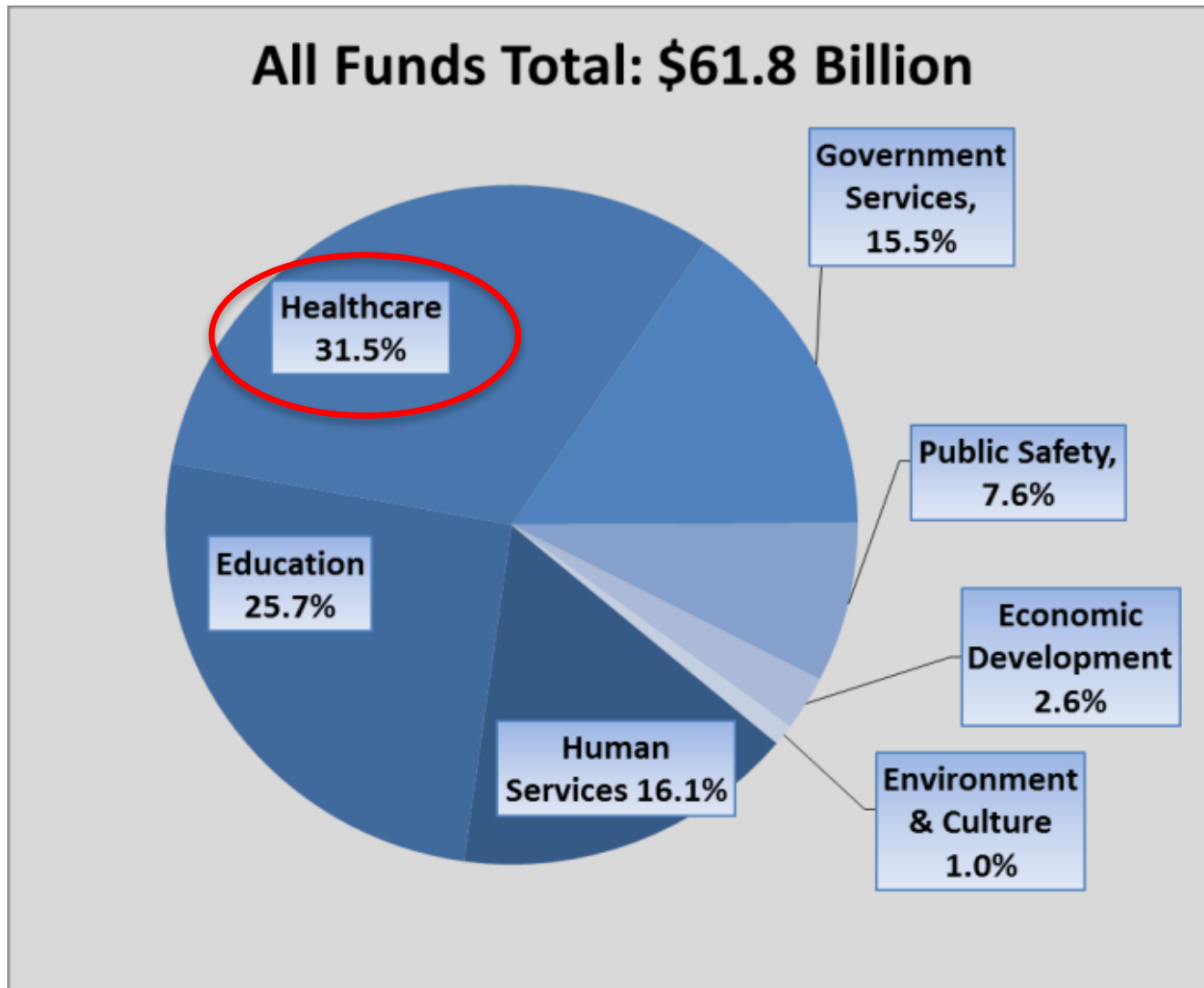
An iconic image of child poverty



Children Living in Poverty

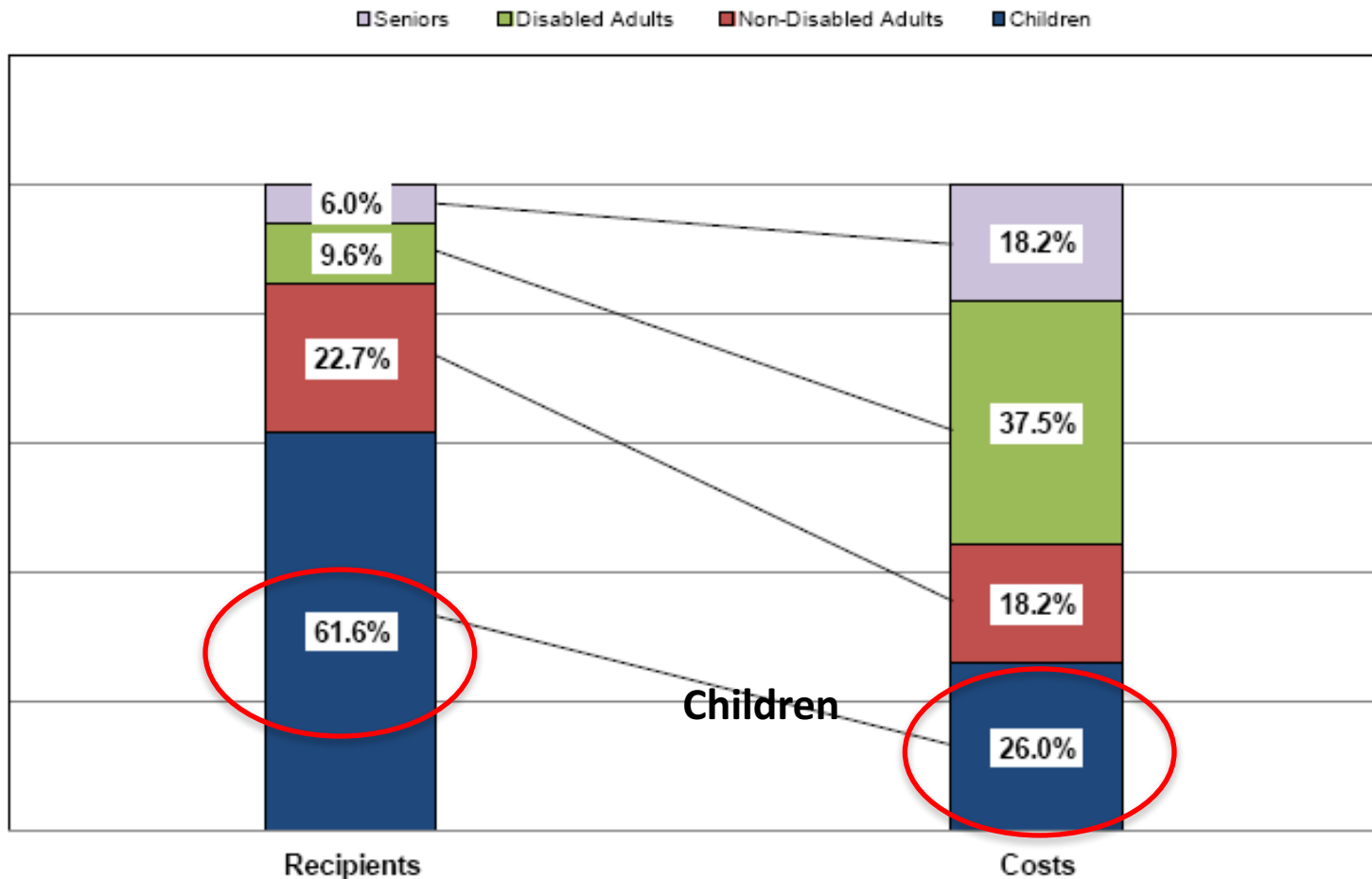


Healthcare Services Account for \$19.2 B of the State's Budget



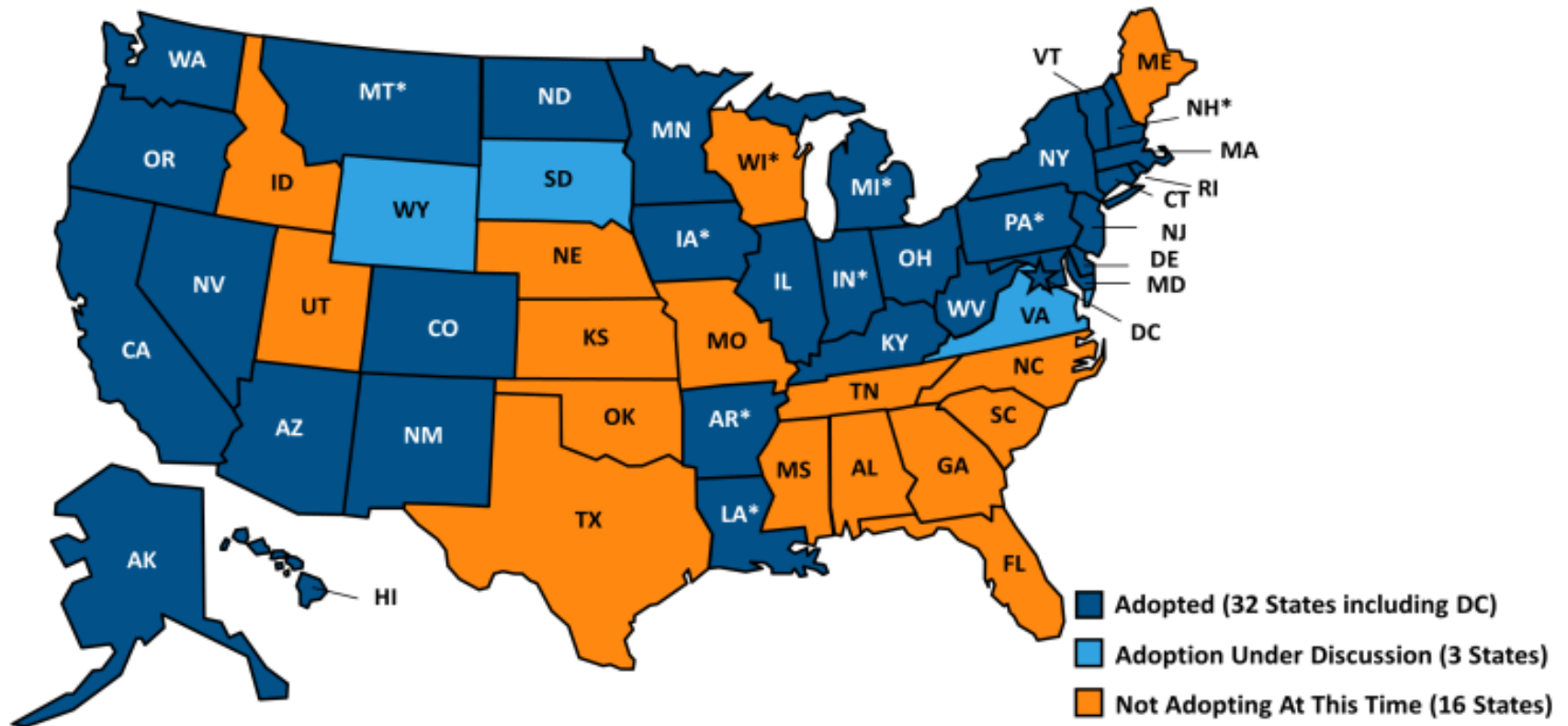
One out of Every Four Dollars is spent on Children

State of Illinois Medicaid Program Distribution of Enrollment and Costs: FY2010



Source: Email communication between Civic Federation and Illinois Department of Healthcare and Family Services, March 22, 2012.

Current Status of State Medicaid Expansion Decisions

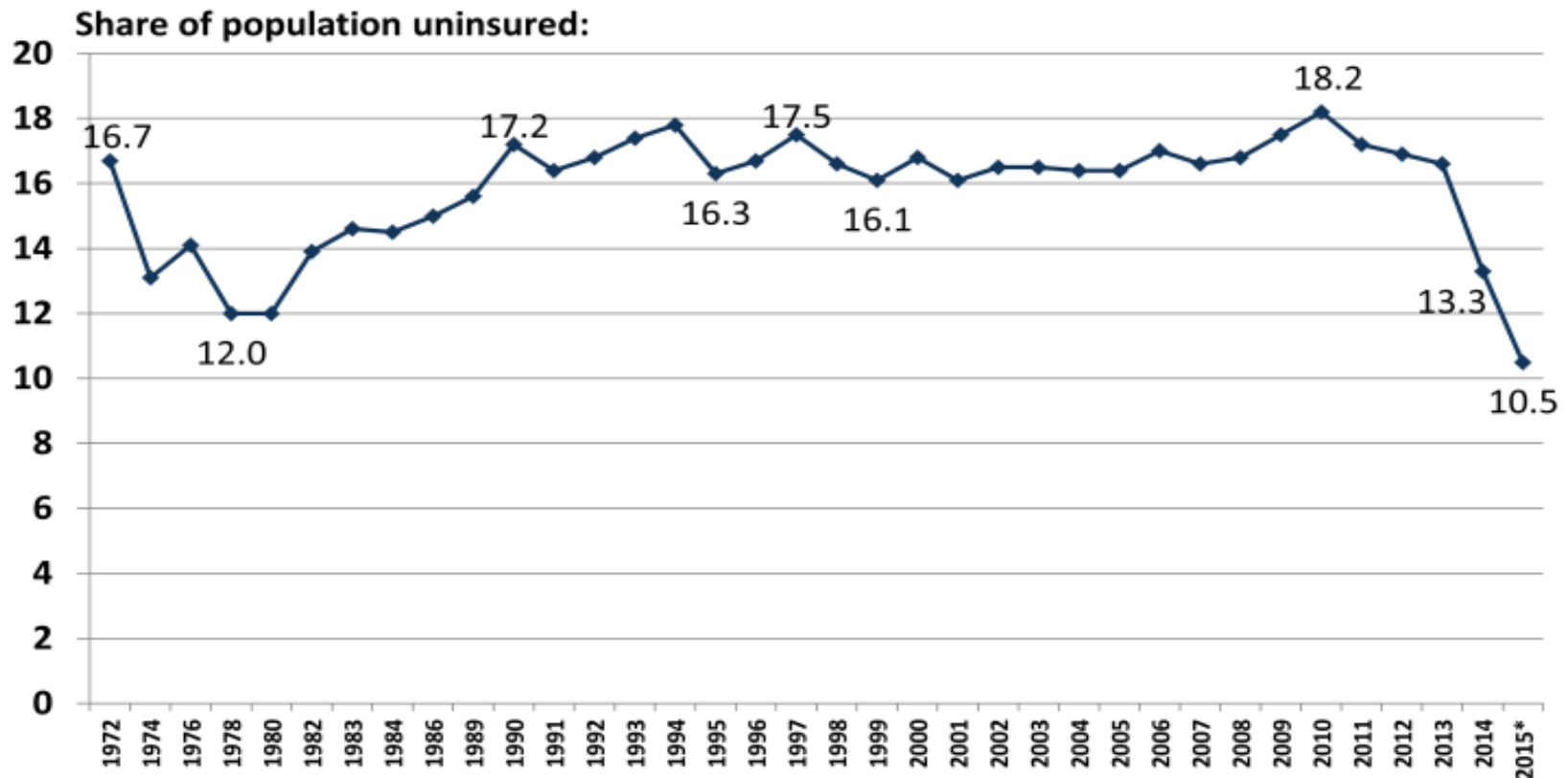


NOTES: Current status for each state is based on KCMU tracking and analysis of state executive activity. *AR, IA, IN, MI, MT, NH and PA have approved Section 1115 waivers. Coverage under the PA waiver went into effect 1/1/15, but it has transitioned coverage to a state plan amendment. Coverage under the MT waiver went into effect 1/1/2016. LA's Governor Edwards signed an Executive Order to adopt the Medicaid expansion on 1/12/2016, but coverage under the expansion is not yet in effect. WI covers adults up to 100% FPL in Medicaid, but did not adopt the ACA expansion. See source for more information on the states listed as "adoption under discussion."

SOURCE: "Status of State Action on the Medicaid Expansion Decision," KFF State Health Facts, updated January 12, 2016.

<http://kff.org/health-reform/state-indicator/state-activity-around-expanding-medicaid-under-the-affordable-care-act/>

Uninsured Rate Among the Nonelderly Population, 1972-2015

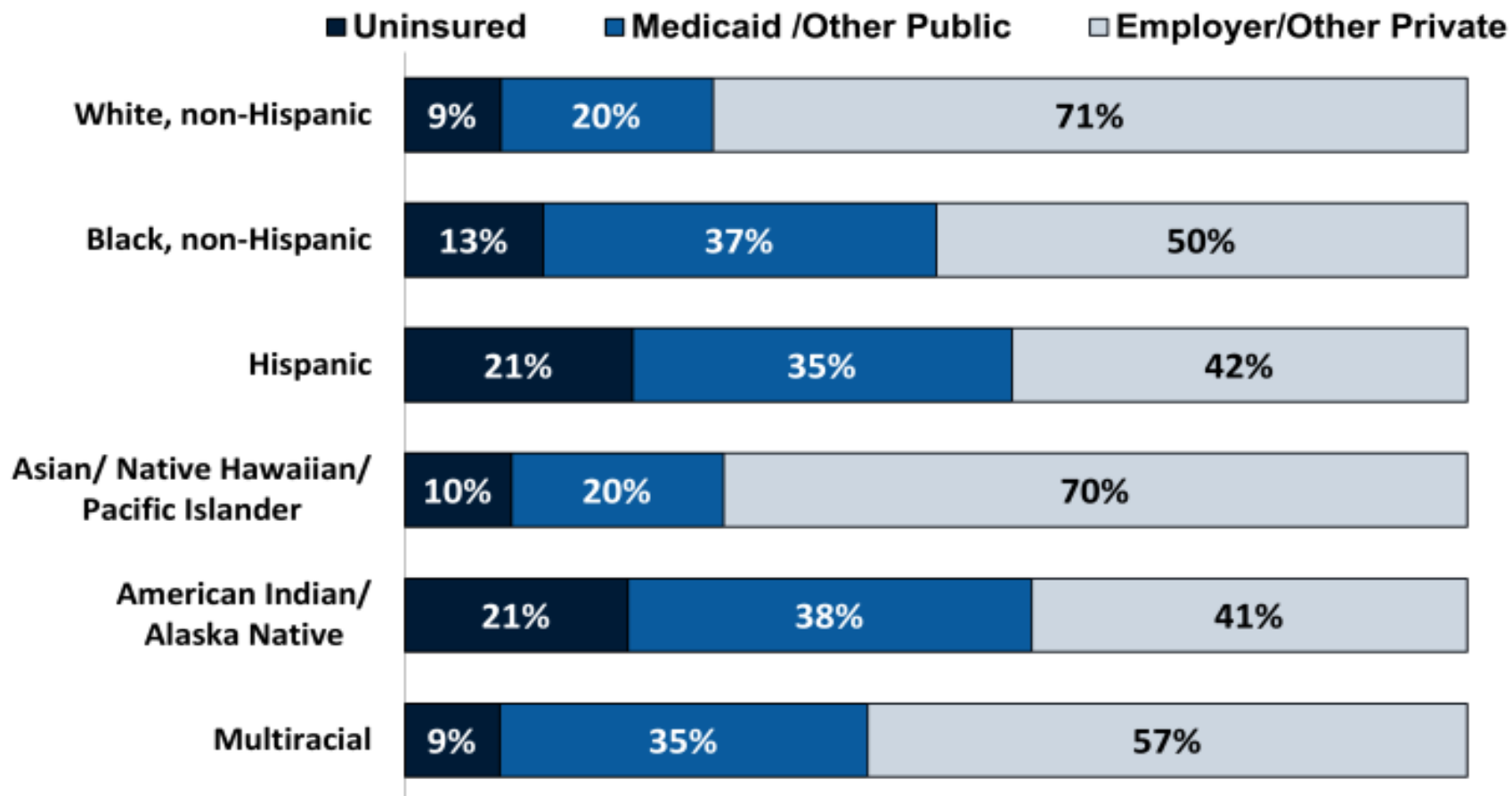


Note: 2015 data is for Q1 and Q2 only.

Source: CDC/NCHS, National Health Interview Survey, reported in http://www.cdc.gov/nchs/health_policy/trends_hc_1968_2011.htm#table01 and <http://www.cdc.gov/nchs/data/nhis/earlyrelease/insur201511.pdf>.



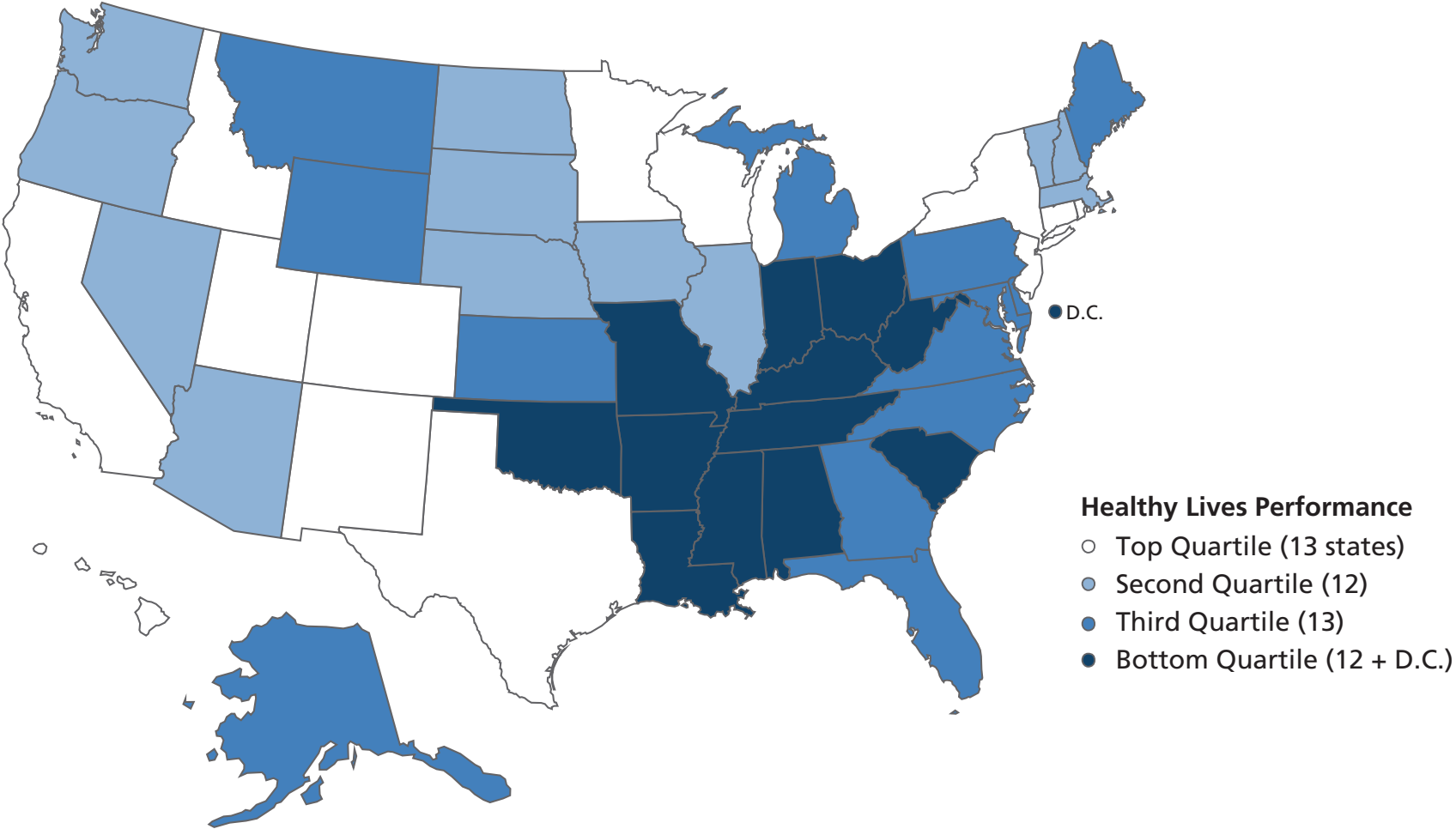
Insurance Coverage of Nonelderly by Race/Ethnicity, 2014



NOTES: American Indian group includes Aleutian Eskimos. Data may not total 100% due to rounding.

SOURCE: Kaiser Family Foundation analysis of the 2015 ASEC Supplement to the CPS

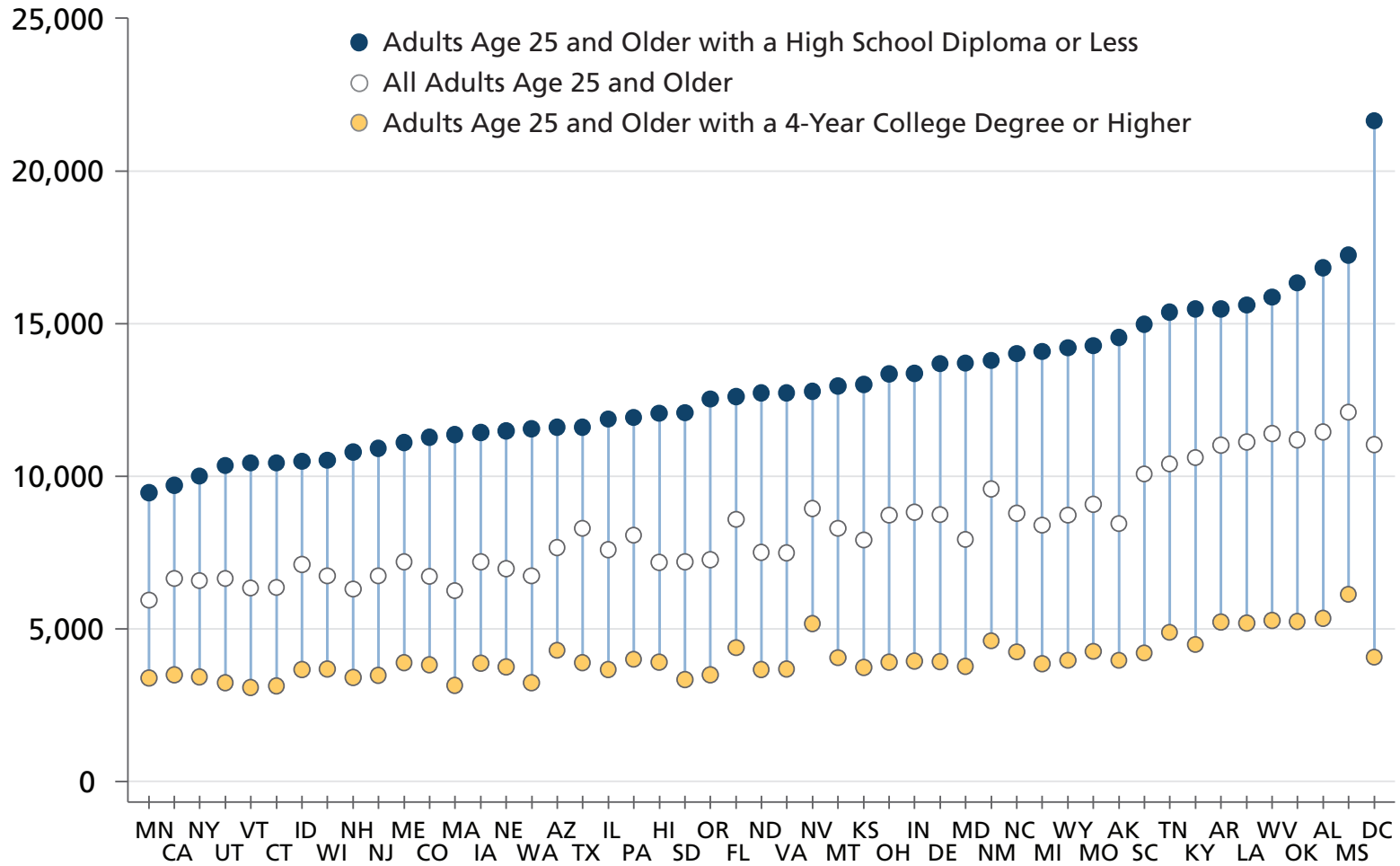
OVERALL PERFORMANCE ON HEALTHY LIVES DIMENSION FOR VULNERABLE* POPULATIONS



* Definition of vulnerability varied by indicator for this dimension. See Appendix B for additional details.
Source: Commonwealth Fund Scorecard on State Health System Performance for Low-Income Populations, 2013.

YEARS OF POTENTIAL LIFE LOST BEFORE AGE 75, BY EDUCATIONAL ATTAINMENT

Rate per 100,000 Population (age-adjusted)



Missing (2 states): GA, RI

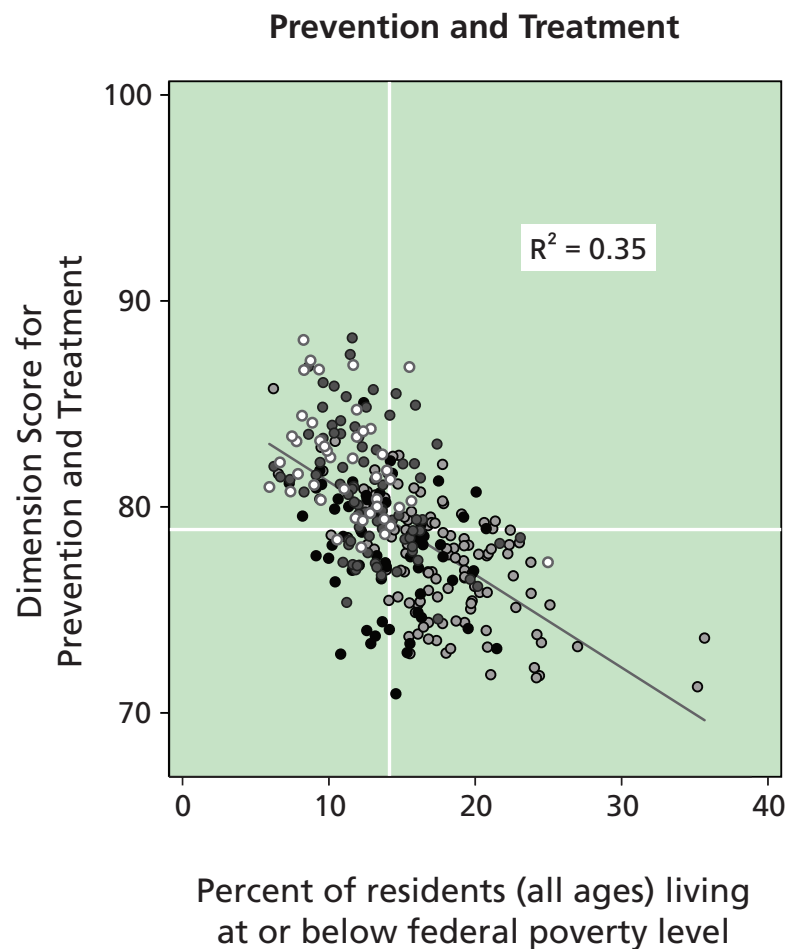
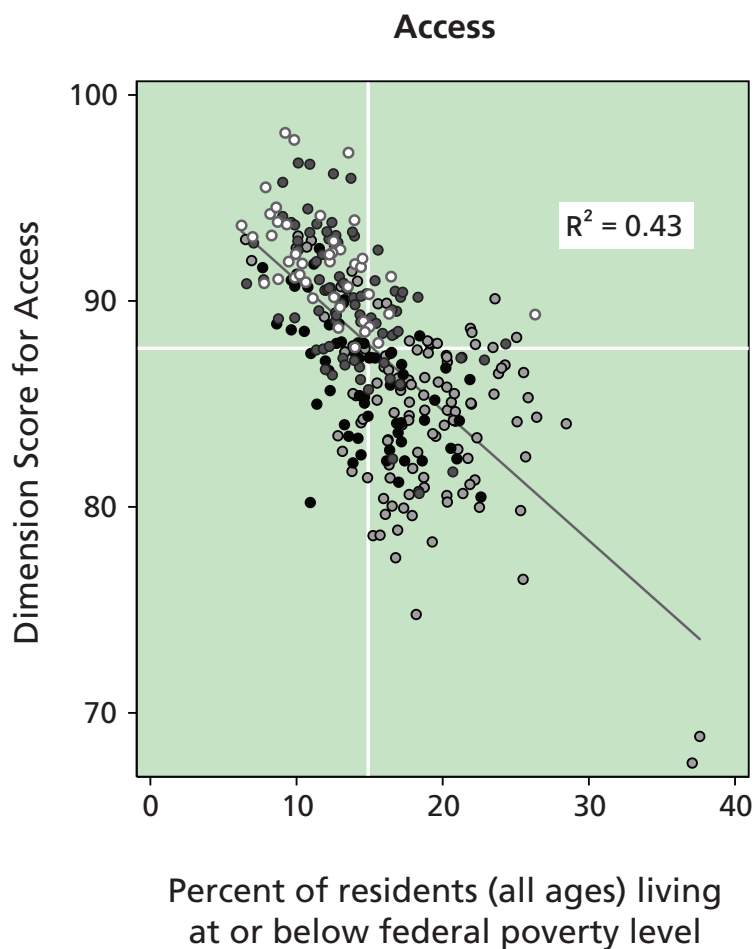
Data: 2008–2010 National Vital Statistics System (NVSS) mortality all-county micro data files.

Source: Commonwealth Fund Scorecard on State Health System Performance for Low-Income Populations, 2013.



Performance Is Lower in Places with a Higher Proportion of Residents Living in Poverty

○ Northeast ○ South ● Midwest ● West



Note: Each dot represents one of 306 hospital referral regions.

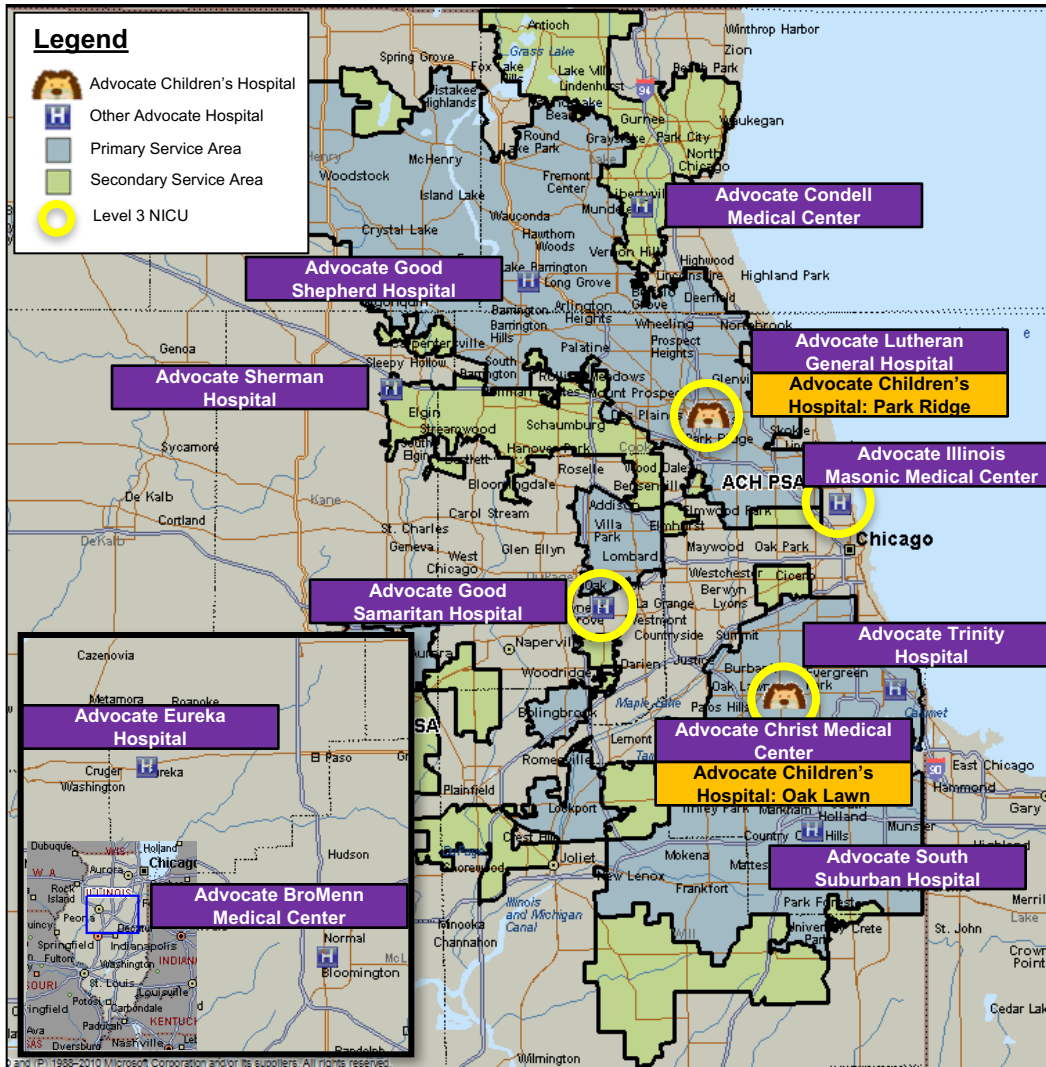
The Affordable Care Act is the end of the beginning

Shifting to Medicaid Managed Care

- In August 2014 – individuals enrolled in Illinois Medicaid began mandatory enrollment in a Managed Care Organization
- Currently 2 million individuals are enrolled in a Medicaid MCO or provider sponsored ACE
- The Advocate Accountable Care program has 100,000 lives – 80% are children under 18 – their mothers are included in the remaining lives



Advocate Health Care System Pediatrics Stats

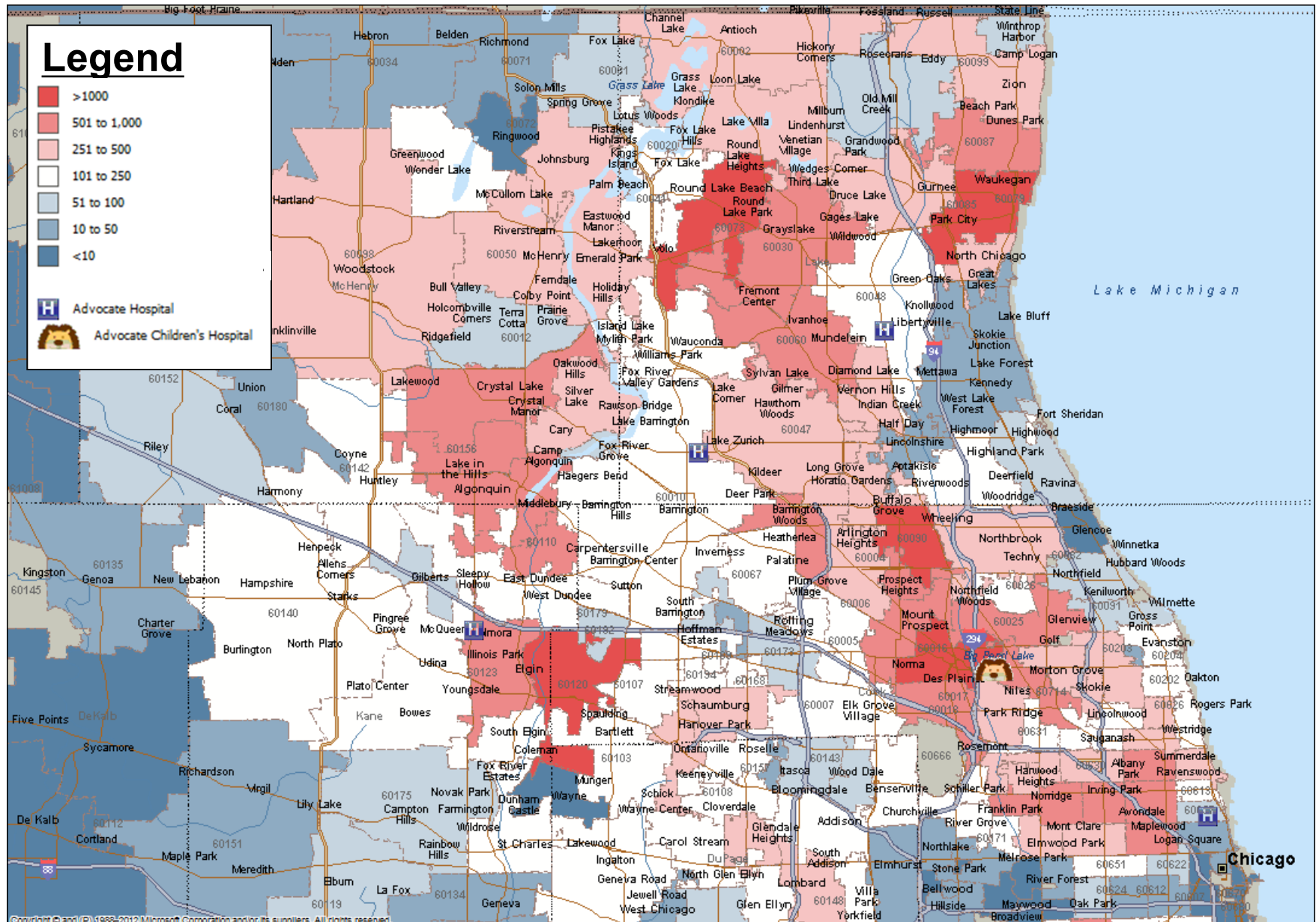


- 2 Advocate Children's Hospital Campuses
 - Oak Lawn: 106 Beds
 - Park Ridge: 129 Beds
- 7 Additional Advocate Hospitals with Pediatric Beds (83 beds)
- 4 Level III NICUs (122 beds)
- 2 PICUs (30 beds)
- 2 Pediatric Emergency Departments
- 330 Pediatric ambulatory / physician access points throughout the market
- 80 employed pediatricians
- 350 aligned pediatricians

• Service area represents combined Advocate Children's Hospital campuses



Ages 0-19: Northern Market



What have we learned?

- Our population uses the ED for primary care services four times the rates of the commercial population
- 45% of our inpatient spend on this population is for preterm babies
- Asthma ranks as one of the most common chronic diseases
- Many of these patients present to the hospital for behavioral health needs because they lack outpatient access
- We spent 40 million to care for the top 3% complex children in 2014

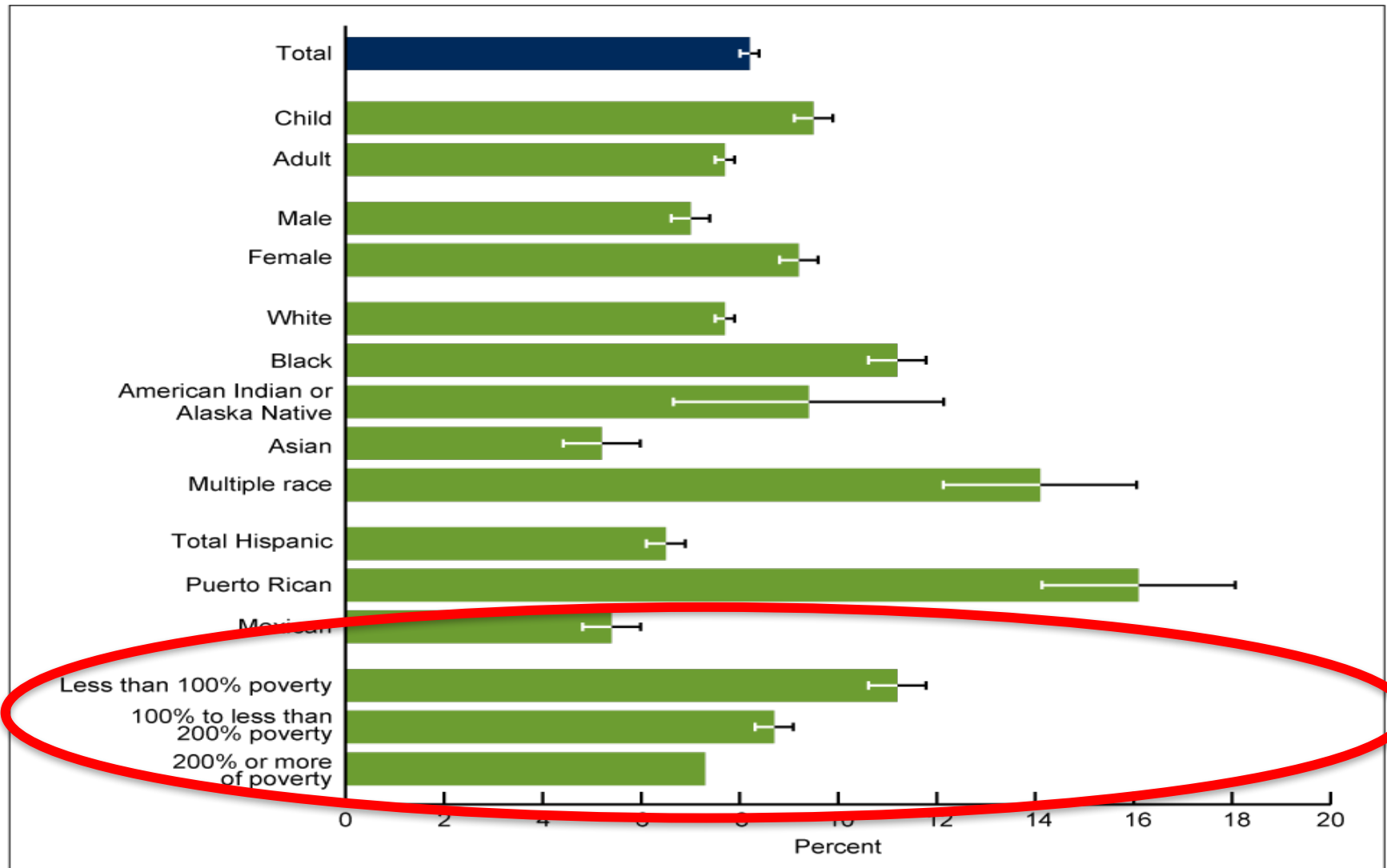


Pediatric Utilization Comparison

	Medicaid ACE	Commercial HMO	Commercial Attributed PPO
ER Visits/1000	456.8	173.9	171.8
Admits/1000	37.4	27.9	36.4
Days/1000	196.3	133.0	199.0
Readmission Rate	3.0%	1.7%	3.0%



Figure 2. Asthma prevalence, by selected demographic characteristics: United States, average annual 2008–2010



— 95% confidence interval.

NOTES: Asthma prevalence refers to percentage of people who have ever been diagnosed with asthma and still have asthma. Access data table for Figure 2 at: http://www.cdc.gov/nchs/data/databriefs/db94_tables.pdf#2.

SOURCES: CDC/NCHS, Health Data Interactive and National Health Interview Survey.



Health does not start in a doctor's office or hospital...it starts where we live, work, learn and play.

Creating a Culture of Wellness



Developing Medical Neighborhoods

 Advocate Children's Hospital



Children's Hospital



Community Hospitals



Schools



Primary Care Clinics



Tele-health

Walgreens
healthcare clinic

**Retail Health and
Urgent Care**

Rowing the boat in the same direction

